

Modius® OpenData® for Colocation

Modius OpenData for Colocation Providers & Tenants

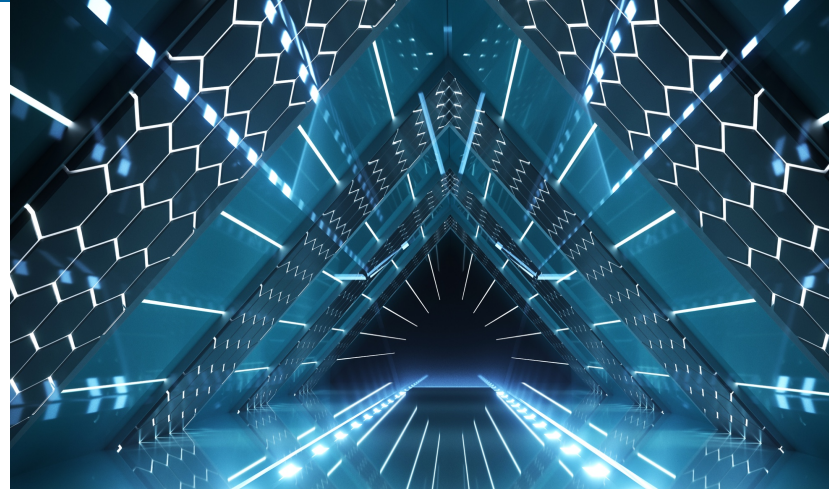
As the demand for cloud infrastructure accelerates, the need for colocation capacity is growing at unprecedented levels. Colocation providers must be positioned to scale with speed and flexibility to meet the demands of tenants, while optimizing utilization of Capex to drive revenue. Simultaneously, colocation providers must maintain a reliable, secure and importantly, transparent environment for tenants in support of SLA's. These challenges require 100% uptime across the network but also require operational excellence to achieve high rates of utilization across the boundaries of physical infrastructure. Complex challenges arise from physical infrastructure, which is distributed across multiple sites and likely through acquisitions, has disparate systems and equipment running on a variety of platforms and technologies. For any colocation operator, this can be a daunting challenge. While the networking infrastructure supersedes the physical boundaries of a multitude of sites, a colocation operator must abstract the entire physical infrastructure into digital twins, and into a single unified view to optimize utilization and drive revenue.

The OpenData system from Modius provides that single, centralized system, in a unified view. OpenData is the industry's only fully distributed data collection solution for gathering real-time performance metrics across a network of mission critical colocation facilities. OpenData provides core data collection, monitoring and analytics capabilities across all networking infrastructure. In addition to collecting data from all disparate power, cooling and environmental equipment. OpenData enables colocation operators to ensure 100% uptime and transparency requirements to meet tenant SLA's while optimizing capacity utilization in this extraordinarily complex environment.

Further, OpenData meets the needs of colocation tenants, who require transparency to operating conditions, along with immediate access to their data in a secure, low latency IT environment.

Benefits for Colocation Tenants

- Transparency in viewing real-time usage of power and space within their allocated area
- Reliable and low latency networking to provide quick access to data, securely



Benefits for Colocation Providers

- Portfolio-level management of infrastructure assets
- Real-time monitoring enables the provider to discover stranded power, cooling and space capacity to sell and increase revenue
- Operates with equivalent performance in 1, 10 or 10,000 sites for exceptional scalability
- Visibility across all colocation facilities to ensure they are running well within operational parameters, including the ASHRAE TC9.9 guidelines to ensure SLA compliance
- Effectively reduces risk through alerts and alarms
- Improves power utilization, resulting in energy savings and importantly, reduces operating expenses to improve margins
- Comprehensive reporting for management and detailed SLA's for tenants by tenant
- Analytics to support preventative maintenance, effectively reducing operating costs and driving efficiency
- Forecasting and trending data over time to anticipate capacity requirements of existing and new tenants for enhanced capacity planning and possibly Capex avoidance

- Proof of SLA compliance through accurate metrics and reporting
- Accurate billing based upon actual power usage
- Provides key differentiator in a highly competitive market

Increase Utilization & Revenue

- **Cooling Management:** Reduce costs by optimizing temperatures and reducing energy consumption
- **Power Metering:** Identify stranded power to increase capacity and revenue
- **Capacity Planning:** Avoid capital expenditure or unnecessary expansion through effective capacity utilization and planning
- **Chargeback:** Accurately billing for tenant usage of power, cooling and space, while anticipating future requirements
- **Consolidations:** Effectively plan for migrations or consolidations with accurate, real-time data and metrics



How it Works

1 Collect

Collecting unstructured measurements across your colocation facilities creates a unique set of issues: How do I collect data from all the different devices and applications across all of my colocation sites? How do I account for the data anomalies?

OpenData collects data from any and all devices. It supports multiple protocols and is agnostic to all makes and models, networked and non-networked. OpenData automatically translates and normalizes that data from across your colocation facilities into structured metrics that are easily formatted for presentation in reports to support SLA compliance, charts, graphs and dashboards.

2 Analyze

OpenData provides a central system with a unified view representing operating conditions across all of your colocation facilities. It provides a large library of configurable “out of the box” reports related to utilization, productivity, costs. It also allows the colocation operator to create custom metrics and combine data to improve capacity utilization by analyzing the operational conditions on each facility floor and individual tenant space. These metrics can lead to preventative maintenance, result in significant cost savings, and even avoid downtime. In doing so, OpenData enhances OPEX to reduce cost, while increasing revenue. This is the essence of Real-time Operational Intelligence (RtOI).

3 Act

Sound management decisions rely on Real-time Operational Intelligence (RtOI). OpenData provides all the tools you need to manage the performance across your colocation facilities, from integration of disparate devices, to analytics, to customizable and integrated dashboards, all in a “single pane of glass”. Analytics can easily capture data from any device, application, or process and provide the RtOI needed to quickly make the right decisions for your colocation facilities and your tenants.

About Modius

Modius Inc. is a world leading end-to-end solution provider for managing the availability, capacity and efficiency in critical facilities, including data centers, smart buildings, telecommunications and other IoT environments.

The Modius flagship offering, OpenData, provides all the tools needed to manage the performance of mission critical infrastructure, from integration of disparate devices, to analytics, to integrated dashboards, all in a “single pane of glass.”