

Modius *OpenData*® and StarLine Track Busway

Easily track and report continuous power consumption data **anywhere** and from **any device** in labs or data centers with StarLine CPM power meters and Modius *OpenData* software

Data Center Monitoring - From Racks to CRACs

By integrating their systems, StarLine and Modius have created a turnkey solution to give data center operators the best of both worlds; a flexible busway power system from StarLine that is easily configurable to the changing needs in the data center, along with continuous power monitoring and reporting from Modius. This interoperability makes it possible for customers to get the granular power data they need to optimize their power systems, improve capacity, and report detailed usage for customer charge-backs and other reports.

The Modius *OpenData* software and StarLine Track Busway solution monitors all Critical Power Monitor (CPM) Meters as well as additional equipment in the data center. Using a variety of communication protocols, *OpenData* collects, normalizes and evaluates performance data to provide the visibility and decision support required for better control over the data center.

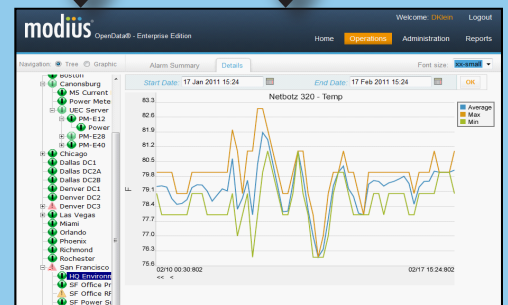
Introducing Modius *OpenData*® for StarLine

Better manage the physical space and systems capacity of your data center with Modius *OpenData* for StarLine. *OpenData* Software captures data from StarLine track busways and raceways to monitor power consumption of racks and cabinets. The StarLine CPMs at each service or branch feed can report the data using either SNMP or Modbus protocols. *OpenData* can then use this data to provide detailed power consumption statistics at varying levels, including room, zone, row, or rack-level. The interfaces to the CPM meters are pre-configured in the *OpenData* system, and once deployed, are easily tracked and monitored by *OpenData* software.

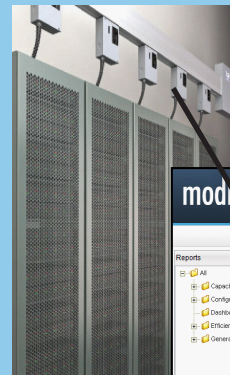
Do More With What You Have

By enabling integration, data collection, data normalization, and a unified view of the requisite performance data monitored throughout the data center, facility, and IT managers are able to achieve a higher level of operational maturity. For example, the power consumption data provided by Modius/StarLine can now be used to improve cost containment through better capacity management, and enable customer charge-backs to bring operating expenditure under control.

Selected Screen Shots

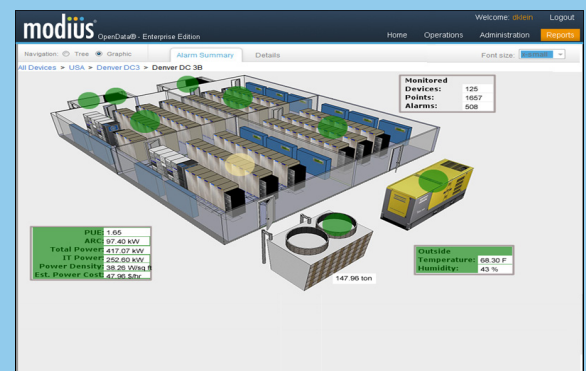


Collect and Track Power Levels in Real-time



Customer	Point Name	Output Real Power
Customer 2	Output Real Power	2 Points
Customer 1	Output Real Power	2 Points
Customer 4	Output Real Power	2 Points
Customer 2	Output Real Power	2 Points
Customer 1	Output Real Power	1 Point

Group Meters & Track Energy Usage by Customer or Business Unit



Alarm/Alert Status of Power Infrastructure

About Modius

Who We Are

Modius® Inc. is a leading supplier of Data Center Infrastructure Management (DCIM) solutions for optimizing data center infrastructure and operations. Modius develops and commercializes real-time monitoring and analytics solutions that enable unified visibility and better control over the critical systems in your data center, including power, cooling, and space.

The company's mission is to simplify the operations of the increasingly diverse and complex facilities and IT environments, while markedly improving performance efficiencies. Founded in 2004 with headquarters in San Francisco, California, Modius has customer deployments world-wide.

Modius OpenData® Value Propositions

Protect Mission-Critical Assets	Lower Data Center Costs	Increase Data Center Capacity	Report Eco-Efficiency Metrics
<ul style="list-style-type: none"> Faster response Failure point reduction Alarm redundancy SLA statistics 	<ul style="list-style-type: none"> Energy cost savings Real-time measurement Better FTE leverage Continuous improvement 	<ul style="list-style-type: none"> Track loads Forecast growth trends Balance power & cooling Track "drift" 	<ul style="list-style-type: none"> Track GHG emission Set baselines Demonstrate gains Prepare for DOE & EU compliance

StarLine

Universal Electric Corporation's award-winning StarLine systems are the only fully flexible products available that allow access to power anywhere it is needed. Designed to meet the changing electrical power needs of any business requiring ultimate flexibility, StarLine products have revolutionized electrical power distribution in data centers, industrial manufacturing facilities, retail chains and grocery stores worldwide.

How to Buy Modius OpenData for StarLine

Starter Kit - For single-site deployments for 25 meters

- Kit includes software, installation assistance, training and 1 year of maintenance
- Field upgradeable up to 100 meters
- Supports all StarLine meters (e.g., M5, M20, M21)
- Stores up to 10GB of data (approximately 100 meters)
- Fully upgradeable to *OpenData* Enterprise Edition
- Promotional pricing available only through StarLine

Scale Out - For deployments greater than 100 meters, expansion to non-StarLine meters, or multi-site deployments, upgrade to *OpenData* Enterprise Edition

- Supports all StarLine meters plus additional equipment (e.g., UPS, PDUs, power strips, Etc.)
- Includes retro-enablement of legacy meters (by leveraging voltage and power factor data from M20 & M21 meters)
- No limit on monitored equipment or data collection

Modius OpenData: StarLine Kit vs. Enterprise Edition		
Modius OpenData Features & Functions	StarLine Kit	Enterprise Edition
Real-time & Continuous Monitoring	Meter Monitoring	Full Monitoring
Alarm Mgt. with Single Console (Tabular & Graphic)	Alarm Mgt.	Alarm Mgt.
Notification by TXT/Email/Pager, etc.	Notification	Notification
Reporting and Data Access	Basic Reporting	Advanced Report
Multi-site Data Capture and Management		Multi-Site Mgt.
Support for Serial Equipment		Serial Support
Advanced Dashboards & Visualization		Adv Dashboards
Controls-based Integrations for Cooling and Virtual Workload Mgt		Controls Integrate
	PRICING: Kit for \$4,000	Call for Pricing

Modius OpenData solutions are completely vendor neutral and highly scalable with no coding required to add new devices or to deploy across multiple sites. Modius OpenData's ease-of-use and flexibility are unprecedented: Users can easily configure their own dashboards and reports with the power of advanced OpenData Analytics.

Technical Specifications:

Modius OpenData® is a software application that can either be installed on-premise or hosted in the cloud. The application installs on Windows Server 2008, 2008 R2, 2012, and runs Express, Workgroup (Up to 2012), or Enterprise versions of MS SQL Server 2008 - 2016. Many customers choose to run the application within VMWare ESX. For more information, please contact us at info@modius.com.

Contact Modius or your StarLine representative for more information about how Modius OpenData software and StarLine Track Busway makes it possible to easily track and report continuous power data anywhere and from any device in the data center

Modius Inc.

71 Stevenson Street
Suite 400
San Francisco, CA 94105

www.modius.com
sales@modius.com
(888) 323-0066